

# APPENDIX 1

Identification of SGS Owned Land

## LAND OWNED BY SGS



Key



Site Area

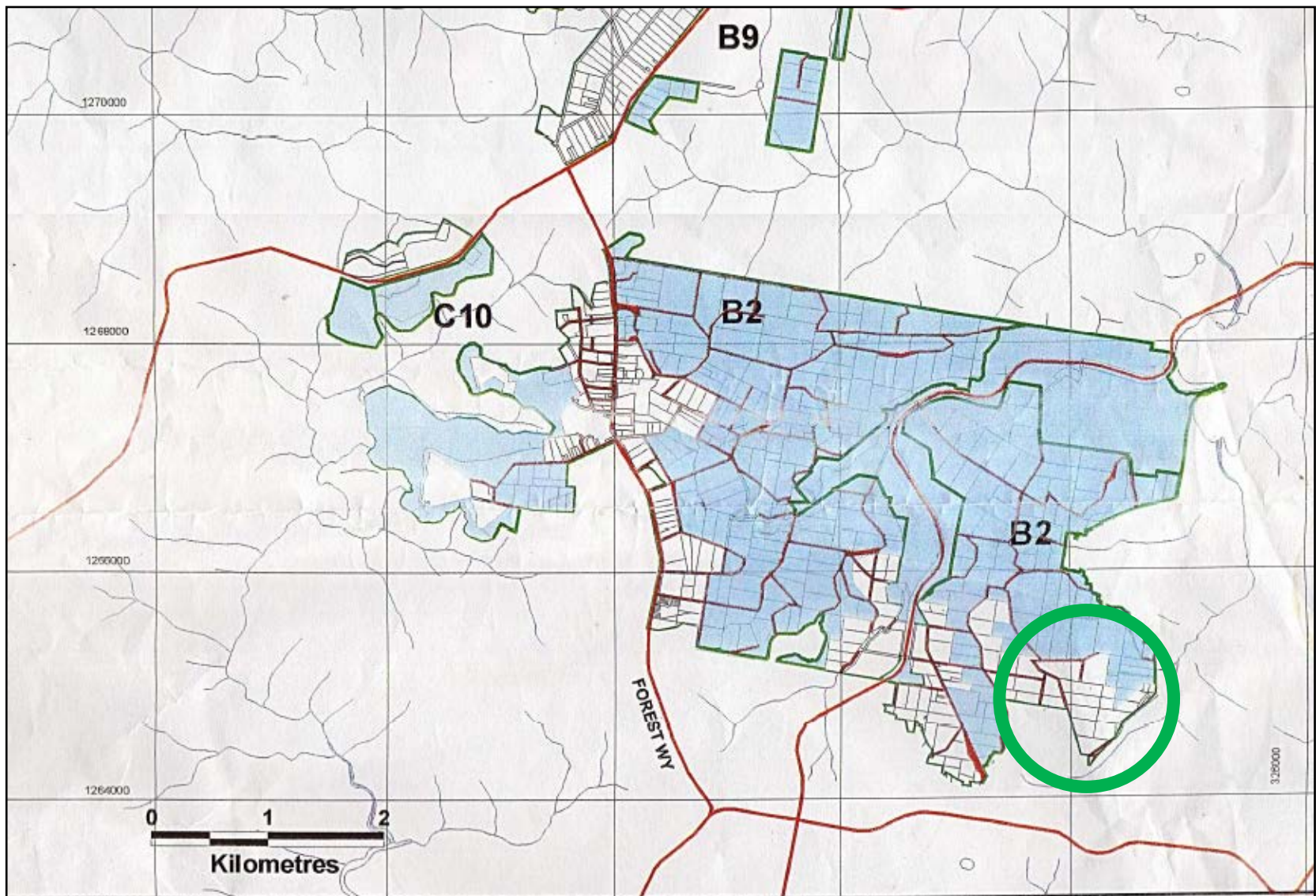


B2 Oxford Falls Locality (Warringah LEP 2000)

# APPENDIX 2

WLEP2000 Environmental Protection  
Exhibited Map





Certified in accordance with the  
Environmental Planning and  
Assessment Act, 1979  
Date :

ENVIRONMENTAL PLANNING AND ASSESSMENT ACT, 1979  
**WARRINGAH LOCAL ENVIRONMENTAL PLAN 2000**  
**ENVIRONMENT PROTECTION**

Index

Environment  
Protection

# APPENDIX 3

Timeline

Map A

Map B

Map C

Map D

Map E

Relevant Planning Policy

Warringah Council  
Environmental Constraint Classification  
(subjective not scientific)

Housing for Seniors &  
People with a Disability  
Site Permissibility

SEPP 5 (Housing for Seniors & People with a Disability)  
1982

Warringah LEP - 1985

Warringah Non- Urban Lands Study, 1998

Warringah LEP 2000

WLEP 2000 Proposed Environment Protection  
Map

SEPP Seniors Living 2004

Review of SEPP Seniors Living 2005 - 2007

Site Compatibility Certificates - 2009

SEPP Housing for Seniors & People with a  
Disability 2004 (Amended)

NSW Planning Assessment Commission (PAC) issued a  
report entitled *"Review of Four Sites within Oxford  
Falls Valley for Urban Development"*, 2009

WLEP 2009, (Deferral of B2- Oxford Falls)

Warring Oxford Falls Valley & Belrose North Strategic  
Review 2013

1982

1985

1998

2000

2004

2005-07

2009

2013

Area with potential for higher  
intensity development & land uses

Remnant Bush common & well  
preserved within Warringah

Not Environment Protection

Prohibitive, severe or significant  
constraints to development

Primary Constraint Analysis = E3  
zoning

MAP C

MAP A

MAP E

MAP B

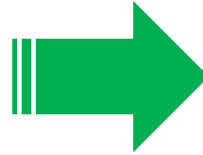
MAP D



## MAP A

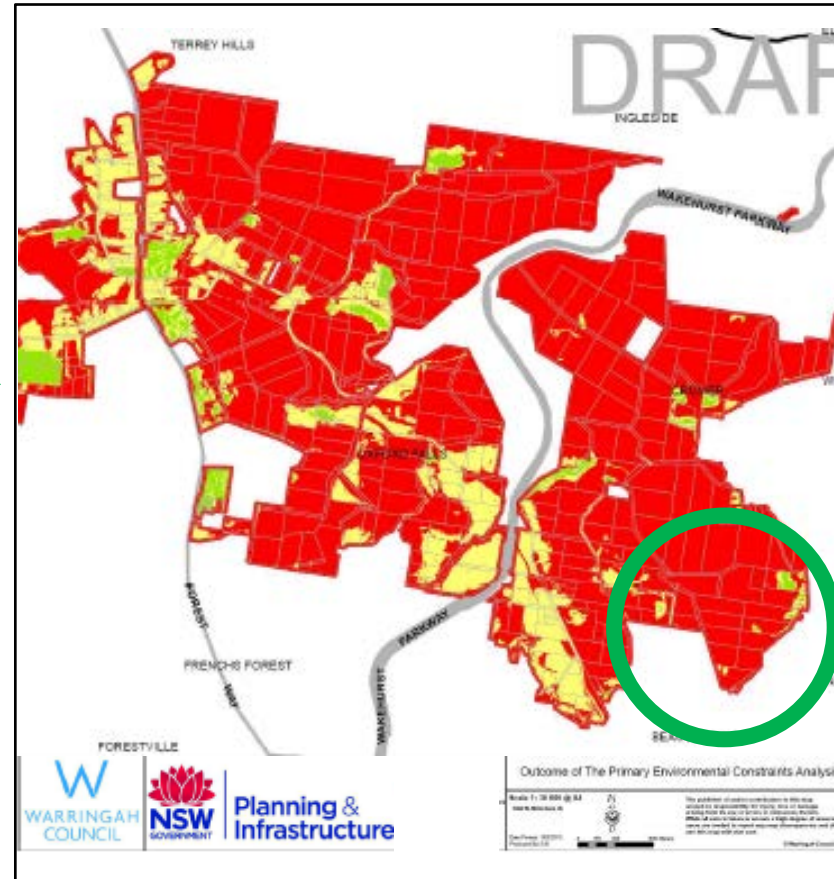
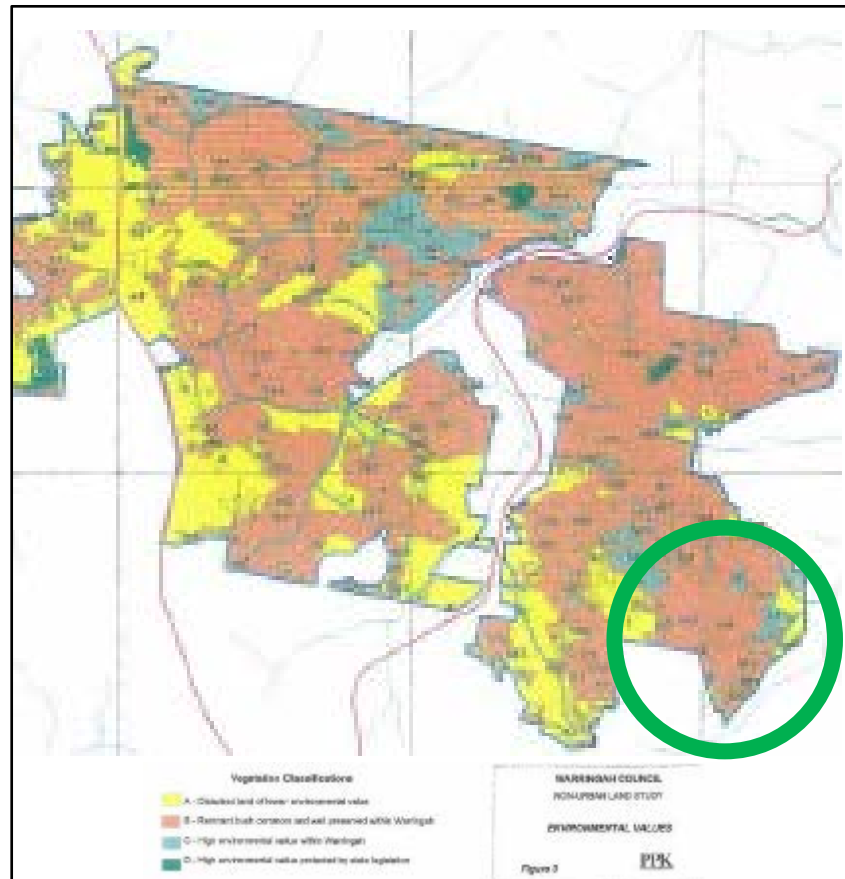
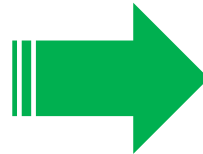
### WARRINGAH COUNCIL NON URBAN LAND STUDY (2002)

- Disturbed land of lower environmental value
- Remnant bush common and well preserved within Warringah**
- High environmental value within Warringah
- High environmental value protected by state legislation



### WARRINGAH COUNCIL OUTCOME OF THE PRIMARY ENVIRONMENTAL CONSTRAINTS ANALYSIS (2013)




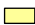


- No environmental constraints to development
- Moderate environmental constraints to development
- Prohibitive, severe or significant constraints to development**

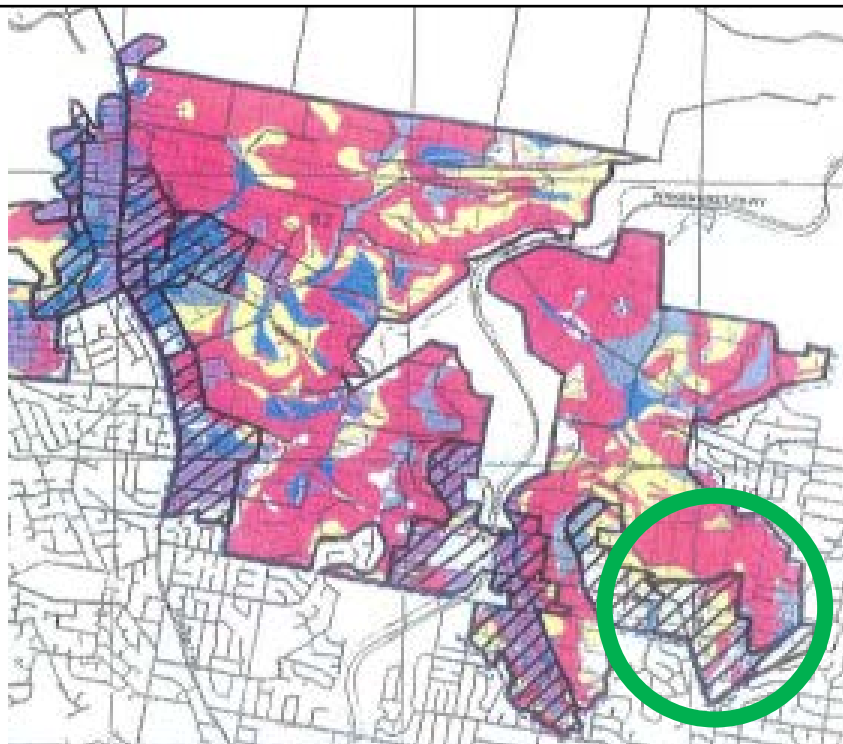




## MAP C

### WARRINGAH COUNCIL NON URBAN LAND STUDY (1997-2001) PROPOSED FUTURE LOCALITIES & CHARACTER

-  Class 1 – No significant environmental constraints to development
-  Class 2 – Few environmental constraints to development
-  Class 3 – Moderate environmental constraints to development
-  Class 4 – Significant environmental limitations to development
-  Class 5 – Severe environmental limitations to development
-  **Area with potential for higher intensity development and land uses**


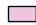


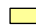


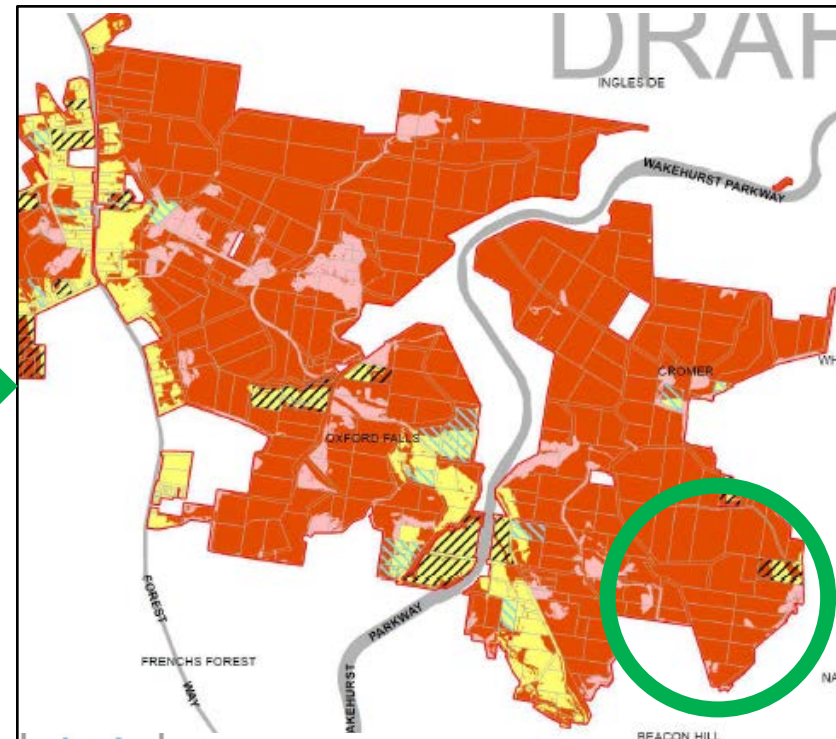
Classifications  
 Class 1 - No significant environmental constraints to development  
 Class 2 - Few environmental constraints to development  
 Class 3 - Moderate environmental constraints to development  
 Class 4 - Significant environmental limitations to development  
 Class 5 - Severe environmental limitations to development

WARRINGAH COUNCIL  
 NON-URBAN LAND STUDY  
 PROPOSED FUTURE LOCALITIES AND CHARACTER  
 Figure 10  
 PPK

## MAP D

### WARRINGAH COUNCIL SECONDARY CONSTRAINTS ANALYSIS (2013)

-  Secondary Constraint Analysis = E3 zoning consideration
-  Secondary Constraint Analysis = E3 zoning consideration
-  **Primary Constraint Analysis = E3 zoning**
-  Land for further zoning consideration
-  Land for further zoning consideration

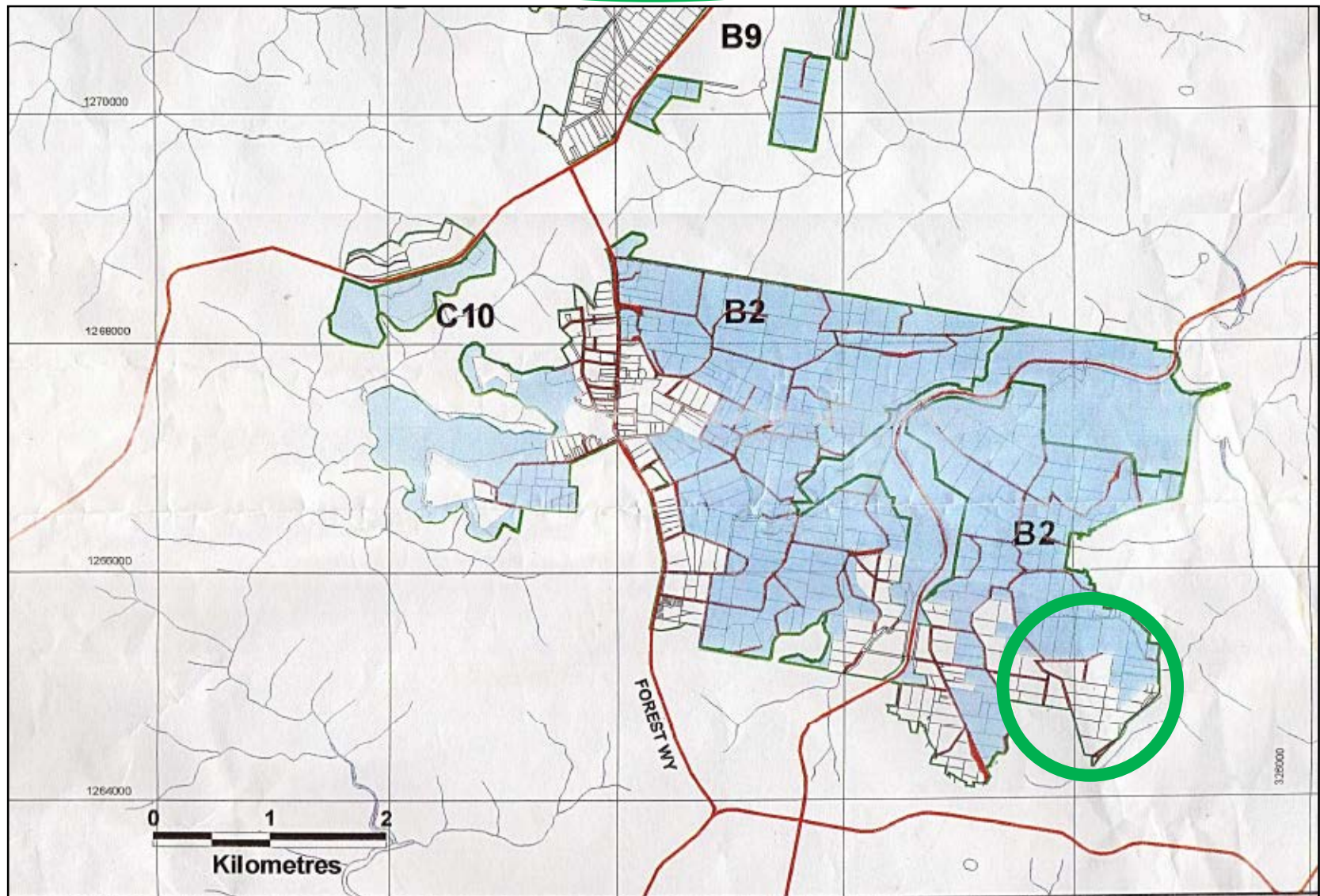


WARRINGAH COUNCIL  
 NSW GOVERNMENT  
 Planning & Infrastructure

Secondary Constraints Analysis  
 Scale 1:50 000 @ A4  
 0 50 100 150 200 Meters  
 The publication of certain contributions to this map is subject to responsibility for errors, loss or damage arising from the use of this map is disclaimed. Users are advised to consult any map disclaimer and use this map with care.



# MAP E



Certified in accordance with the  
Environmental Planning and  
Assessment Act, 1979  
Date :

## ENVIRONMENTAL PLANNING AND ASSESSMENT ACT, 1979 WARRINGAH LOCAL ENVIRONMENTAL PLAN 2000 ENVIRONMENT PROTECTION

Index

Environment  
Protection